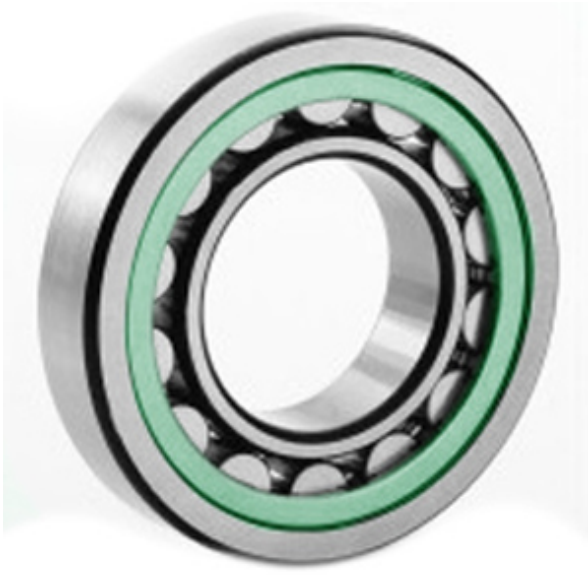




Anhui Xiaoyi Bearing Import & Export ...



20206 T Bearing 2D drawings and 3D CAD models

1.181 Inch | 30 Millimeter x 2.441 Inch | 62
Millimeter x 0.63 Inch | 16 Millimeter
CONSOLIDATED BEARING 20206 T Spherical
Roller Bearings

Bearing No. 20206 T

Category	Spherical Roller Bearings
Inventory	0.0
Manufacturer Name	CONSOLIDATED BEARING
Minimum Buy Quantity	N/A
Weight	0.24
EAN	0644075155465
Product Group	B04311
Internal Clearance	C0-Medium
Mounting Method	Shaft Mount
Rolling Element	Spherical Roller Bearing
Bore Profile	Straight
Cage Material	Polymer
Enclosure	Open
Number of Rows of Rollers	Single Row
Relubricatable	No
Withdrawal Sleeve	Not Applicable
Withdrawal Nut	Not Applicable
Inch - Metric	Metric
Long Description	30MM Straight Bore; 62MM Outside Diameter; 16MM Width; C0-Medium Clearance; Shaft Mount; Single Row of Spherical Roller Bearings; Polymer Cage Material; Open



Anhui Xiaoyi Bearing Import & Export ...

	Enclosure; Not Relubricatable
Category	Spherical Roller Bearing
UNSPSC	31171510
Harmonized Tariff Code	84823040
Noun	Bearing
Keyword String	Spherical
Manufacturer URL	http://www.consbrgs.com/
Weight / LBS	0.529
d	1.181 Inch 30 Millimeter
B	0.63 Inch 16 Millimeter
D	2.441 Inch 62 Millimeter
Adapter Part Number	Not Applicable Inch Not Applicable Millimeter